



**IBU JUNIOR
OPEN EUROPEAN
CHAMPIONSHIPS
BIATHLON**



POKLJUKA

17-21 JAN 2022

INVITATION

IBU JUNIOR OPEN EUROPEAN CHAMPIONSHIPS BIATHLON
ODPRTO EVROPSKO PRVENSTVO IN IBU POKAL ZA MLAJŠE ČLANE V BIATLONU

SLOVENIA
FOR
BIATHLON





Official Invitation is in compliance with the IBU Event Guidelines for COVID-19 season 2021/2022.

Special regulations referring to this topic are highlighted.

The situation is changeable and we are counting on your understanding if any things change at the last minute and deviate from those provided in this invitation.

Our promise is that you will feel safe!

How to protect yourself and others from Coronavirus



ALWAYS KEEP A
DISTANCE OF 1.5-2.0 M
FROM OTHERS



WEAR A FACE
MASK WHERE
REQUIRED



WASH YOUR HANDS
REGULARLY AND
THOROUGHLY WITH SOAP



DO NOT SHAKE
HANDS



KEEP YOUR HANDS
AWAY FROM
YOUR FACE



SNEEZE AND COUGH
IN THE CROOK OF
YOUR ARM

Contact Tracing App – the #OstaniZdrav (#StayHealthy) mobile application



A. GENERAL INFORMATION

A.1 COMPETITION VENUE

SPORTS CENTRE TRIGLAV POKLJUKA

Sports Centre Triglav Pokljuka
Srednja vas v Bohinju 165/a
4267 Srednja vas v Bohinju
Slovenia

SC Triglav Pokljuka is situated at the high plateau 1340 m above sea level, 20 km from Slovenian famous tourist resort and host city Bled (505 m above sea level). The whole region is a part of the Triglav National Park, covered with pine trees.

All courses are in the woods area, while clear part is the Stadium with Shooting range, Start/ Finish Area, Wax Cabins and Ski test area.

Lowest point of the course: 1333 m

Highest point of the course: 1371 m

A.2 TRAVEL INFORMATION

ARRIVAL TO BLED

By plane: to the Jože Pučnik Airport Ljubljana

Airport Ljubljana – Bled: 25 km, direction Jesenice/Karavanke Tunnel

By train: to Railway Station Jesenice, Railway Station Ljubljana

Station Jesenice – Bled: 10 km, direction Kranj

Station Ljubljana – Bled: 40 km, direction Jesenice/Karavanke Tunnel

By car:

from Austria: direction Villach (A11) via Karavanke Tunnel – Bled

direction Graz (A9) via Spielfeld-Šentilj/Maribor – Ljubljana – Bled

from Italy: direction Tarvisio (A23) via Ratece – Jesenice – Bled

direction Trieste (A4) via Fernetici – Ljubljana – Bled

You may check latest [traffic conditions here](#).



TOLLING SYSTEMS

Two ways of tolling are available to users of Slovenian motorways and expressways, depending on the category of their vehicle.

The vignette system is intended for vehicles whose maximum permissible weight is up to 3,500 kg, with or without a trailer. Purchase is mandatory to use toll roads.

The DarsGo System is toll charge per km driven for vehicles whose maximum permissible weight exceeds 3,500 kg and is stipulated by the government of the Republic of Slovenia. Toll varies based on the particular motorway section and the toll-rate category or emission standard of the vehicle. All necessary arrangements regarding the DarsGo tolling system can be made online at www.darsgo.si.

Road Karawanks Tunnel – Bled is a toll road!

Vignettes could be purchased at petrol stations in Slovenia and neighboring countries, at offices of the national motoring organization and foreign motoring organizations, at post offices in Slovenia and at some newspaper stores.

Using a toll road without a valid vignette (i.e. without paying the toll) is considered a criminal offence according to the Roads Act and is subject to penalty of 300 to 800 EUR.

Please check website [DARS \(Slovene Motorways\)](http://DARS(SloveneMotorways)) for more information.

A.3 CONTACT INFORMATION

ORGANIZING COMMITTEE POKLJUKA

Poslovna cona A 37

4208 Šenčur, Slovenia

+386 4 2791 920

info@biathlon-pokljuka.com

www.biathlon-pokljuka.com

OC Pokljuka President

Jelko Kacin

OC Pokljuka Deputy President

Andrej Šter

Secretary General

Tim Farčnik

A.4 ORGANIZING COMMITTEE FOR JOECH 2022 POKLJUKA

Jelko Kacin	OC President
Andrej Šter	OC Deputy President
Tim Farčnik	Secretary General tim.farcnik@biathlon-pokljuka.com
Nina Jakhel	Competition Secretary nina.jakhel@biathlon-pokljuka.com
TBC	Chief of Competition
Rajko Podgornik	Assist. chief of Competition
Luka Klančar	Competition Office office@biathlon-pokljuka.com
Samo Seršen	Accreditation accreditation@biathlon-pokljuka.com
Romana Meglič	Accommodation accommodation@biathlon-pokljuka.com
Domen Slabe	Transport transport@biathlon-pokljuka.com
Aleksander Gasser	Media press@biathlon-pokljuka.com
Karel Nikolavčič	Chief of Shooting Range
Branko Zupan	Chief of Courses
Sandi Beguš	Chief of Stadium
Peter Miklavec	Chief of Timing & Material Control
Robert Tomše	Chief of Team & Wax Area
Branko Gomilar	Technical support competition
Lilijana Gantar Žura	Medical Service
Marjan Jakše	Chief of Security



IBU REPRESENTATIVES

Niklas Carlsson	Secretary General, Official representative of IBU EB
Daniel Böhm	Sports & Event Manager, COVID19 Coordinator

A.5 ACCREDITATION

The Accreditation Office will be situated next to Hotel Center at the venue (Srednja vas v Bohinju 165/a, 4267 Srednja vas v Bohinju)

Upon arrival in Pokljuka all teams are requested to report to the Accreditation Office.

Car passes and parking permits for teams will also be handed out at the Accreditation Office.



Only one person per team should collect accreditations. Accreditations will only be handed out with a negative valid COVID-19 test (if not excluded as described in Annex 7, IBU SARS-CoV-2 Test-Protocol Season 2021/2022) and signage of IBU's COVID-19 declaration (Annex 1) to agree with all measurements and restrictions taken to secure the event safety.

CONTACTS



Pavel Kobela

PLARAS, official Accreditation Company
pavel@plaras.com

Samo Seršen

Accreditation OC
accreditation@biathlon-pokljuka.com

Opening hours Accreditation Office:

Monday, 17 January	8:00 – 19:00
Tuesday, 18 January	8:00 – 18:00
Wednesday, 19 January	8:00 – 14:00
Thursday, 20 January	8:00 – 14:00
Friday, 21 January	8:00 – 14:00
Saturday, 22 January	8:00 – 14:00
Sunday, 23 January	8:00 – 11:00

A.6 LIABILITY AND INSURANCE

The organizer will not be held liable for any injuries to persons or material damage including those of third parties. All participants must have an adequate accident and health insurance.

By submitting the Entry by names, the National Federation confirms the existence of the required insurance for all persons entered (IBU Rule 1.6.1.2).

OC Pokljuka recommends that you enquire about the possibilities of travel cancellation insurance.

A.7 IMPORT OF MEDICATION

Travelers arriving in the EU from third countries can bring in their personal luggage only the medications which they need for: their personal use, or personal use of their family members, or on the basis of an authorization, for personal use of a maximum of one individual who is not a member of their family.

The quantity of medications must be such as to imply relevant therapeutic use, as follows:

- for a maximum of three weeks for acute conditions,
- for a maximum of three weeks according to the prescribed dosage for chronic diseases or conditions which require long-term use of medications, or, exceptionally, for up to 12 months on condition that an individual furnishes proof of permitted residence in the target country in the respective period, unless the regulations regarding illicit drugs specify otherwise.

In case of medications which require a medical or a veterinary prescription, you must present to a customs authority a proof of a medical or veterinary prescription for such medications, when required.

More information can be found on the official website of [Financial Administration](#) of Republic of Slovenia.

A.8 IMPORT AND EXPORT OF RIFLES AND AMMUNITION

All participant nations may import and export rifles and ammunition into and out of Republic of Slovenia with valid "Weapon possession license" of the respective country of origin.

*Only athletes or teams whose first destination when travelling to European Union (Schengen countries) is Slovenia have to announce rifles and ammunition to OC Pokljuka. **Please fill in Rifle and Ammunition Form in Membercenter no later than 3 January 2022.***

Please note that dry shooting is not allowed in public areas in hotels. Ammunition and rifles must be stored separately. During the competition week police authorities could control national teams if they are respecting the laws.

A.9 VISA REGULATIONS AND APPLICATIONS

Visas for Republic of Slovenia (Schengen Visas) can be issued by Slovenian diplomatic missions and consular posts (check [Slovenia's representations abroad](#)) responsible for the countries named below. To obtain a visa, a third-country national must submit the required documents and meet the conditions prescribed by law. Please see detailed information about visas for Republic of Slovenia at the website of Ministry of the Interior ([Regular Migration Procedures Division](#)).

The following IBU Member Federations require Visa for entering Republic of Slovenia:

ARM, BLR, CHN, IND, KAZ, KGZ, MGL, KOR, RUS, TUR, UZB.

For **BIH, MKD, GEO, MDA, UKR, MNE, SRB** the visa exemption applies only to holders of biometric passports.

In principal, a visa application must be submitted **at least 15 calendar days** and no more than three months before the intended visit. *When an original Letter of Guarantee with names of athletes and officials is needed, please fill in the form as soon as possible but no later than 17 December 2021 so we could send it back in time (via post).*

Please write to info@biathlon-pokljuka.com for **Application Form for Schengen Visa** and **Letter of Guarantee**.

It is the applicant's responsibility to take the necessary precautions to respect the deadlines where an appointment system is in place. Visa cannot be issued at the Slovenian border crossings and late arrangements of Visas will not be possible!

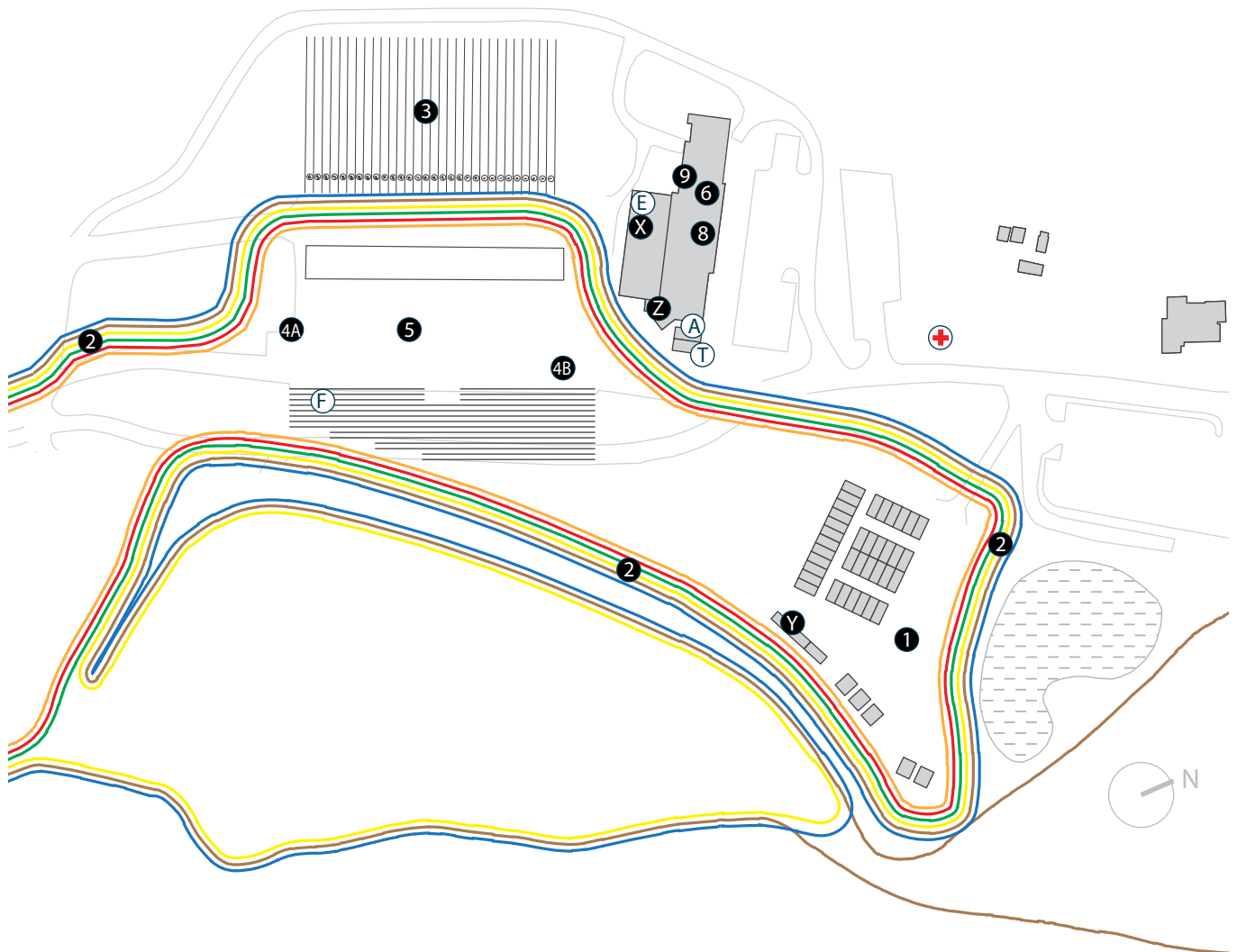


Due to coronavirus diseases COVID-19 special entry restrictions and other measures at the borders of Slovenia are in use. Please check [Border Crossing information webpage](#) for latest updates.

Detailed information will follow closer to the event.

B. LOGISTICS

B.1 TECHNICAL VENUE MAP



- | | |
|----|------------------------------------|
| 1 | WAXING AND TEAM CABINS |
| 2 | COURSE |
| 3 | SHOOTING RANGE |
| 4A | WARMING UP AREA BEFORE THE START |
| 4B | FINISH EXIT AREA |
| 5 | START / FINISH AREAS |
| 6 | COMPETITION OFFICE |
| 8 | DOPING CONTROL AREA |
| 9 | MEDIA AREAS |
| Y | BIATHLON FAMILY CLUB PICK-UP POINT |
| X | OC CATERING AREA |
| Z | VIP HOSPITALITY AREA |
| E | PRELIMINARY MATERIAL CONTROL |
| F | EQUIPMENT CHECK |
| A | ACCREDITATION OFFICE |
| T | TRANSPORT OFFICE |

B.2 ACCOMMODATION

TEAM ACCOMMODATION

All accommodation needs for teams will be arranged via OC Accommodation office. For questions and assistance please contact **Ms Romana Meglič** at accommodation@biathlon-pokljuka.com or +386 51 381 722.

Accommodation prices

Category A: **Hotel Center** **90 €**

Category B: **Hotela Pokljuka (ex Šport), Jelka , Vila Triglav, Hotel Astoria Bled** **85€**

Category C: **chalet Piranka, Sava, Trzinka, Pokljuka** **75€**

Price includes full board per person per day in a double room.

Supplement for single room per day per person: **30 EUR** (cat. A), **25 EUR** (cat. B) or **20 EUR** (cat. C).

Costs of accommodation have to be paid via bank transfer at least 14 days prior to arrival in order to guarantee you booked accommodation.

In case of **no-show** reservations not cancelled **before 27 December 2021** the respective federation will have to pay the hotel's cancellation fee.

SPECIAL NOTE: OC Pokljuka will try to follow your requests about the hotel option, but in case of too many same requests we will accommodate you in other hotel with the same requested standard. First book, first serve rule will be respected. We will confirm your request on time, so you will be informed about your accommodation in advance.

GUESTS ACCOMMODATION

All information about accommodation for NF's guests is provided by OC Accommodation Office, Ms Romana Meglič.



OC Pokljuka will guarantee the necessary safety measures and protocols only for those accommodations that are booked through us.

Please strictly follow the payment instructions. By paying via bank account, we avoid all contacts that would occur when paying with credit cards or money on site.

OC will guarantee that teams are accommodated in separate hotels or at least separated from other hotel guests. Please get in touch with Ms Romana Meglič about other details: additional spare/-isolation room per team, single use rooms, athletes meals, separated dining rooms/times etc.

B.3 TRANSPORT

TRANSPORT OFFICE

Transport office will be located at the competition venue in Pokljuka and will be open daily the same hours as Competition Office (please refer to page 13).

Contact person is **Domen Slabe**, available at e-mail transport@biathlon-pokljuka.com or mobile phone +386 40 744 501.

AIRPORT TRANSPORT

OC Pokljuka can organize transports on previous request from closest airports or railway stations upon payment. **Please fill in Request Form (available in Membercenter) for Transport from/to airports no later than 3 January 2022.**

TRANSPORT TO/FROM THE VENUE

OC Pokljuka offers transport for teams from hotels to the venue and back. In case of booking accommodation through OC or in official OC hotels transfer is free of charge; however, transfers to other accommodation facilities will be charged 10 EUR/person/day (one return ride). All reservations for daily transports should be made via **online booking form** (no later than 18:00 for the next day). Link to booking form will be available closer to event on official website.



OC Pokljuka urge teams to use their own transport as much as possible. Separate transports will be organized from hotels to the venue as the safest option, when possible.

Teams are encouraged to use the online booking form for daily transports.

Number of persons per transportation will be limited. Please plan your transports well ahead. Reduce time at the venue to a minimum.

B.4 WAX TRUCKS

All national federations arriving to the event with their own wax trucks are required to forward all specifications to the OC Pokljuka office. **Please fill in Application Form for Wax Truck (available in Membercenter) no later than 7 December 2021.**

The first truck is free of charge. Surcharges apply for each additional vehicle (depending on the type and electricity requirements). Approval of additional vehicle is a matter of availability of space at the venue.

Due to the very limited space in wax and team area OC Pokljuka will prepare an exact schedule of arrivals and departures to and from the venue that must be respected.

Late arrangements of parking space and electricity requests will not be possible!

ELECTRONIC TOLL FOR TRUCKS

Please visit [DarsGo](#) website for additional information.

B.5 RADIO EQUIPMENT

Radio devices can be imported and exported into and out of Slovenia. Usage of non-coordinated radio frequencies in Slovenia is not allowed. Teams have to announce in advance the type of radio device and frequencies (for all programmed channels on radio device) that will be in use during the competitions. **Please see Application Form for temporary use of Radio Frequency (available in Membercenter) that has to be filled in and submitted no later than 3 January 2022.**

Frequencies check will be made at the venue according to "Day to day" Programme.

B.6 TEAM CAPTAINS MEETING

Team Captains Meeting will take place on **Monday, 17 January 2022 at 20:00** via Zoom.

Given the current situation and restrictions, OC Pokljuka suggests that important updates during the JOECH will be sent to team captains via text messages. We kindly ask all team captains to report their contact mobile number to OC Pokljuka Competition office for that matter.

Detailed information about the location and time will be available closer to the event.

Keep distance. No handshaking.



B.7 MEDAL CEREMONIES

Medal ceremonies will be held on every competition day at the stadium.

B.8 COMPETITION OFFICE

Competition office will be located in the competition venue Pokljuka at the ground level of Hotel Center (known location).

Services will be mainly digitalized.

Contact person is **Luka Klančar**, available at e-mail office@biathlon-pokljuka.com.

Opening hours - Competition Office:

Monday, 17 January	8:00 – 18:00
Tuesday, 18 January	8:00 – 18:00
Wednesday, 19 January	8:00 – 18:00
Thursday, 20 January	8:00 – 18:00
Friday, 21 January	8:00 – 18:00
Saturday, 22 January	8:00 – 18:00
Sunday, 23 January	8:00 – 17:00

No entrance for athletes. OC recommends only team leader/coach should enter the Competition Office. Keep distance.



B.9 INFORMATION FITNESS CENTRES

Bled Rose hotel, Hotel Astoria and Hotel park have their own fitness facilities.

All other could use (previous reservation is needed, use of fitness will be charged according to the price list):

N1 Fitness Bled (in Bled Ice hockey hall)

Ljubljanska cesta 5, 4260 Bled

<http://www.n1-fitness.si/>

Phone: +386 31 773 264

E-mail: info@n1-fitness.si

Samson fitness Club

Kolodvorska cesta 9, 4260 Bled

<http://www.fitnessamson.si/>

Phone: +386 41 618319

E-mail: gricar80@gmail.com

Wellness FenikS and Squash klub (in hotel Kompas)

Cankarjeva 2, 4260 Bled

<https://squashbled.si/>

Phone: +386 41 787 601

E-mail: squashklubbled@gmail.com

B.10 ANTI-DOPING CONTROL

The Anti-doping control station will be located on the competition venue at Hotel Center (basement level, sauna area).

B.11 TEAM CATERING

Like in the past the OC Pokljuka will provide catering for all team members. Teams need to **submit an order** (number of meals) for the next day until 16:30 to the Competition office or via email to office@biathlon-pokljuka.com. Please inform us in advance about any specific dietary requirements (vegetarian, gluten free etc.).

There will be no regular Family Club at the Venue. Lunch packages and hot & cold drinks for Coaches, team-staff, technicians, athletes and Supplying Partners will be provided. Detailed information will be available closer to the event.



C. COMPETITION INFORMATION

C.1 COMPETITION RULES

The competitions will be conducted according to the current IBU Event and Competition Rules as in effect.

Entries can be made via IBU Membercenter only.

C.2 IBU SPORT TECHNICAL OFFICIALS

Race Director (RD)	Arne EIDAM, IBU
Technical Delegate (TD)	Ulrich WALDER, ITA
IBU Referee (Material Control)	Tomasz BERNAT, POL
IBU Referee (Shooting Range)	TBD, NF
IBU Referee (Start/Finish)	TBD, NF
IBU Referee (Course)	TBD, NF

C.3 TARGET SYSTEM

At the shooting range HoRa 2000 E target system will be used.

C.4 COURSE AND STADIUM INFORMATION

Please visit our official website www.biathlon-pokljuka.com to download maps of the venue and courses as well as other useful information.

C.6 COMPETITION PROGRAMME JOECH 2022 POKLJUKA

	COMPETITION	ZEROING	TRAINING
Monday 17.1.	Arrivals 20:00 TC's Meeting (via Zoom)		Mixed Training 13:00-16:00
Tuesday 18.1.			Official Training JW 10:00-12:00 Official Training JM 13:00-15:00
Wednesday 19.1.	10:30 INDIVIDUAL Junior Women 14:00 INDIVIDUAL Junior Men	9:30-10:20 JW 13:00-13:50 JM	
Thursday 20.1.	10:30 SINGLE MIXED RELAY 14:00 MIXED RELAY	9:50-10:20 SMR 13:00-13:50 MR	
Friday 21.1.			Official Training JW 10:00-12:00 Official Training JM 13:00-15:00
Saturday 22.1.	10:30 SPRINT Junior Women 14:00 SPRINT Junior Men	9:30-10:20 JW 13:00-13:50 JM	
Sunday 23.1.	10:30 PURSUIT Junior Women 14:00 PURSUIT Junior Men	9:50-10:20 JW 13:20-13:50 JM	

D. MEDIA INFORMATION

D.1 MEDIA ROOM

Media Room will be located in the basement area of Hotel Center at the venue. It will have Press conference room and photoshooting room. Opening hours will be known closer to event.

D.2 CONTACTS

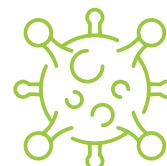
Kateřina Outl

IBU Junior Cup media representative
media.juncup@ibu.at

Aleksander Gasser

OC Media Chief
press@biathlon-pokljuka.com

There will be no contacts to media.



Results, pictures, videos, useful information, points of interest and exclusive news - share your experience with us!

 **Biathlon.Pokljuka**

 **@BiathlonPokljuka**

 **@BiatlonPokljuka**

E. ENTRY DEADLINES

17 December 2021	Registration by number
7 December 2021	Application form for Wax Truck
3 January 2022	Registration by name
3 January 2022	Team Application form for Rifles and Ammunition
3 January 2022	Request form for Airport Transport
3 January 2022	Application form for temporary use of Radio frequency
Depending on entry Into the RS	Letter of Guarantee Visa Application

Registrations are possible only online via IBU, as well are all documents available online at Membercenter.



Organizing Committee Pokljuka

Poslovna cona A 37

SI - 4208 Šenčur

+386 4 2791 920

info@biathlon-pokljuka.com

[**www.biathlon-pokljuka.com**](http://www.biathlon-pokljuka.com)

October 2021